

# AN EXCUSE TO HUG A TREE

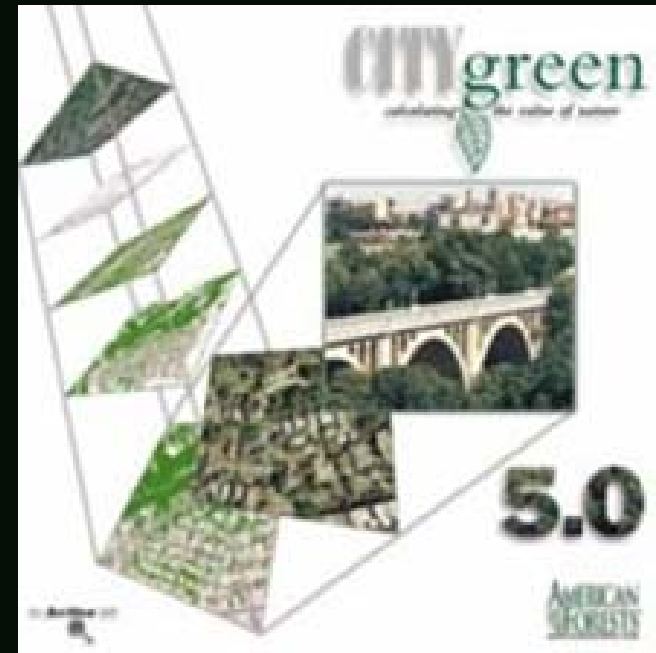
## USING CITYGREEN WITH ESRI ARCVIEW

*"Trees in the city do more than soothe, they keep the air cooler and cleaner, filter pollutants and slow stormwater runoff and build community. Support greener and cleaner cities." (American Forests website 2005)*



## The programme called CITYgreen

*"CITYgreen is a powerful GIS application for land-use planning and policy-making. The software conducts complex statistical analyses of ecosystem services and creates easy-to-understand maps and reports. CITYgreen calculates dollar benefits based on specific site conditions. CITYgreen uses the most up-to-date scientific research to calculate the dollar value of trees and vegetation."*

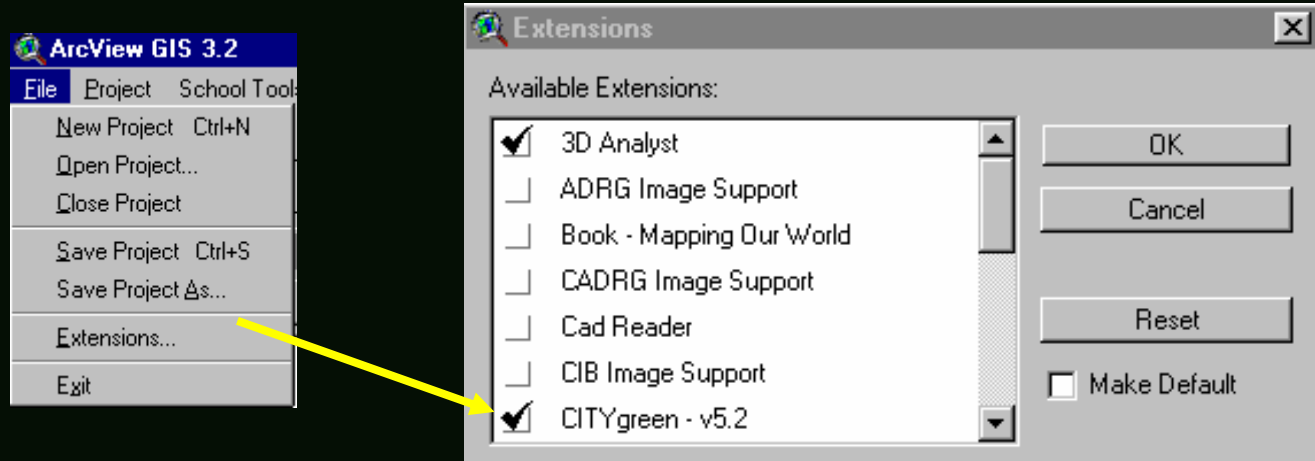


## Premise of CITYgreen

In essence the CITYgreen programme has been developed on the premise that “growing our cities” doesn't have to mean building endless tar and cement infrastructure and removing the natural landscape.

“Based on the most up-to-date, peer-reviewed science, CITYgreen allows cities and conservation groups to calculate the economic and environmental benefits provided by trees and other vegetation and models the economic impact of various development and planning scenarios.”

## CITYgreen is an ESRI ArcView Extension



*"CITYgreen has become a very effective way to teach math, science and geography. It also provides a real-world application to introduce GIS (Geographic Information Systems) in the classroom. With CITYgreen, students learn to value the trees in their environment through hands-on activities with the technology."*

## GIS SKILLS REQUIRED FOR CIYGREEN

If students have undertaken a GIS Skill Development Course they should have most of the GIS skills needed to undertake the programme. In fact CITYgreen is a wonderful summary activity for the students to reinforce the GIS skills they have learnt previously.

As a guide the programme requires students to demonstrate all of the following GIS skills:

- Data importing
- Registering and manipulating images
- Data acquisition
- Theme development and attribute table manipulation
- Data entry
- Digitizing themes
- Thematic maps
- Query processes
- Projection configuration and data configuration.
- Use of Arcpad and GPS
- Hotlinking of Script and images
- Layout



# THE FINAL PRODUCT: A SAMPLE

PROJECT



## STAGE 1: DIGITISING THE THEMES

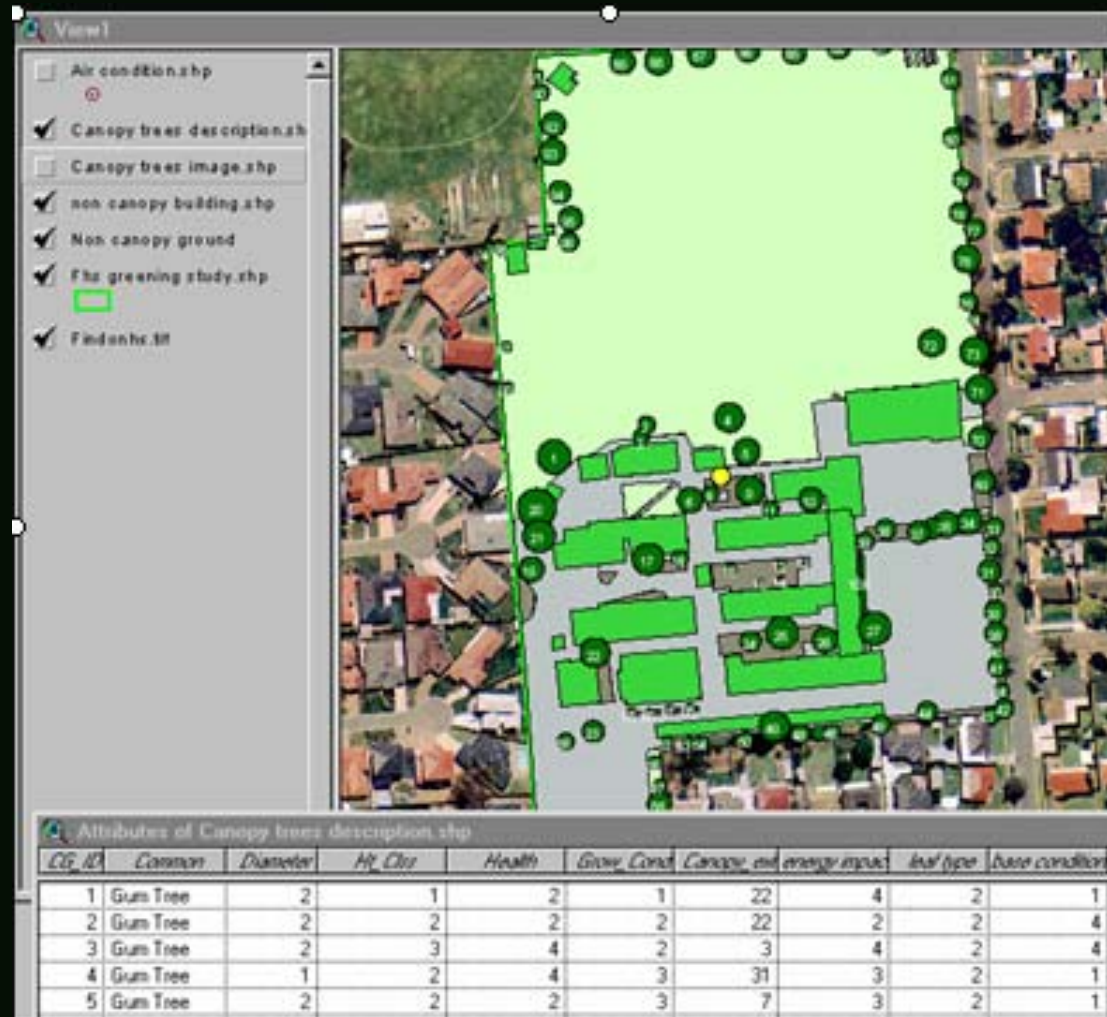






STAGE 3

PLOTTING THE TREES AND ENTERING THE DATA

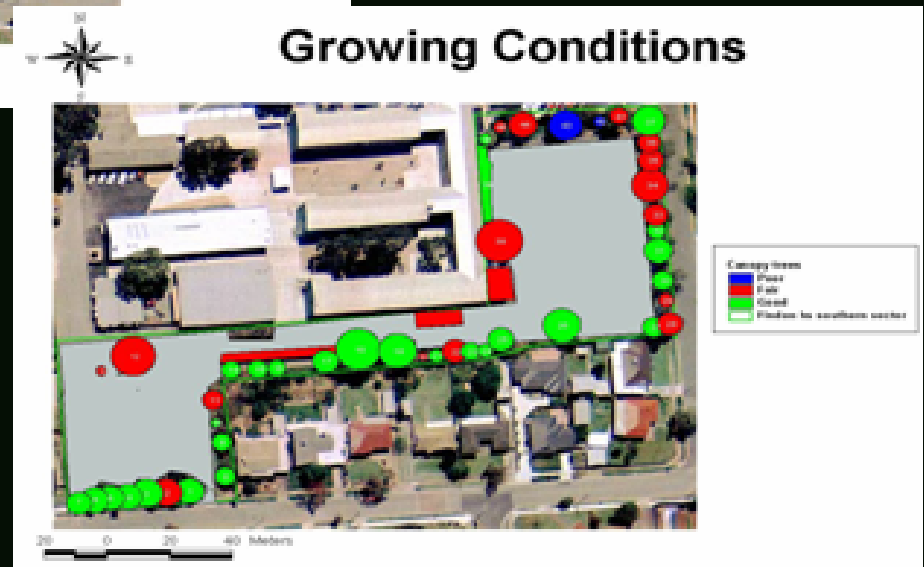
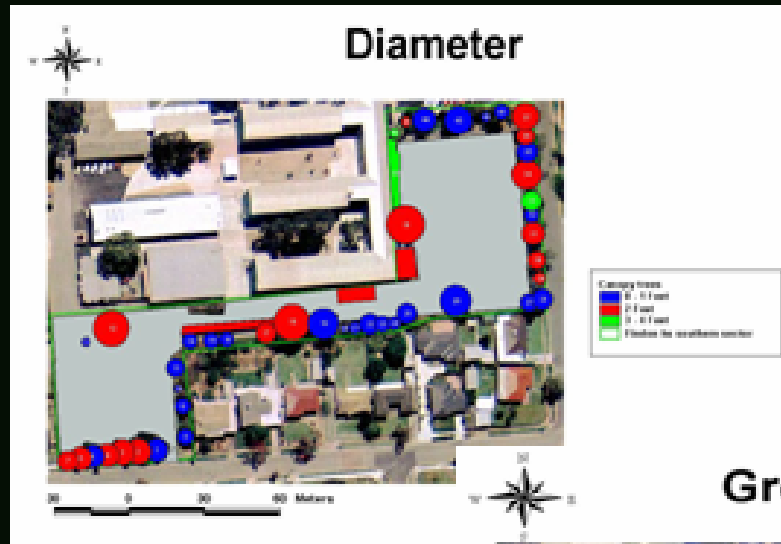


# STAGE 4

# HOTLINKING IMAGES AND DESCRIPTION



# STAGE 5: CREATING THEMATIC MAPS FROM DATA



# STAGE 6: PERFORMING THE CITYgreen ANALYSIS

The screenshot shows the ArcView GIS interface with the CITYgreen Analysis tool. The 'Report Summary' window is open, displaying the following data for the analysis area 'Findon High School':

| Analysis Area                     | Findon High School |                 |
|-----------------------------------|--------------------|-----------------|
| Total Area:                       |                    |                 |
| 0.02                              | sq. miles          |                 |
| 5.62                              | sq. km. (hectares) |                 |
| 13.00                             | acres              |                 |
| Landcover Composition:            |                    |                 |
| 04.93% of Findon High School      | 00.68 acres        | - Trees         |
| 04.04% of Findon High School      | 00.56 acres        | - Trees: Grass/ |
| 00.21% of Findon High School      | 00.03 acres        | - Impervious Su |
| 02.26% of Findon High School      | 00.31 acres        | - Impervious Su |
| 12.07% of Findon High School      | 01.68 acres        | - Impervious Su |
| 28.24% of Findon High School      | 03.92 acres        | - Impervious Su |
| 05.24% of Findon High School      | 00.73 acres        | - Impervious Su |
| 53.23% of Findon High School      | 07.40 acres        | - Open Space    |
| 00.45% of Findon High School      | 00.06 acres        | - Open Space    |
| Ecological Services:              |                    |                 |
| Carbon Removal Benefits:          |                    |                 |
| - Age Distribution:               | Young              |                 |
| - Storage Capacity (tons):        | 40.17              |                 |
| - Sequestration Rate (tons/year): | 0.91               |                 |

The interface also shows the 'Study Area' set to 'Findon High School', 'Use all records' selected, and 'Non canopy ground' selected in the 'View Themes' list. The 'Analysis' section has 'Carbon Storage and Sequestration', 'Air Quality', and 'Stormwater Runoff' checked, and 'Energy' unchecked. The 'Air condition' is set to 'None'.

## CITYgreen ANALYSIS

### What is the environmental and economic impact of the trees in the study area?

- After the surfaces and trees are digitized, the collected data entered and analysis criteria selected, the CityGreen programme conducts an environmental and economic analysis of the study area.
- For the sample study area, the CityGreen programme provided the following carbon removal and pollutant removal analysis:

#### Carbon Removal Benefits:

- Age Distribution: Young
- Storage Capacity (tons): 18.33
- Sequestration Rate (tons/year): 0.41

#### Air Pollution Removal Benefits:

- Air-Quality Reference City: Austin
- Contaminant: Lbs/Year: Dollar Value:
  - - Ozone (O<sub>3</sub>), 24.44, \$75.02
  - - Sulphur dioxide (SO<sub>2</sub>), 7.44, \$5.60
  - - Nitrogen dioxide (NO<sub>2</sub>), 9.73, \$29.87
  - - Removal of particulate matter 10 microns or less (PM<sub>10</sub>), 15.36, \$31.48
  - - Carbon monoxide (CO), 3.16, \$1.37
- Totals, 60.14 lbs., \$143.34

#### Stormwater runoff benefits

- if there were no trees the cost to the school to build stormwater mitigation facilities would be \$5,112 if calculated at a building cost of \$10/cu ft.

## MORE INFORMATION ON CITYgreen

**Available from the American Forests website for US\$200**

**<http://www.americanforests.org/productsandpubs/citygreen/citygreen5.php>**



Sponsored  
by:



## LAUNCHING A NEW RESOURCE

### GIS IN THE FIELD

#### CONTENT

- Introduction to using GIS in the classroom.
- The basics of ESRI ArcView GIS.
- Getting started with ArcView GIS.
- Skate park location.
- Pest plant location.
- Bushfire application
- Real Estate application.
- Streetscape application.
- Wasp nest application.
- Environmental management: revegetation.
- Conclusion: Where to next.

